

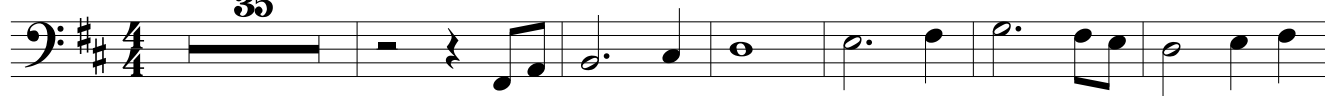
Erdei Mise

Bass

Rédly Dénes

$\text{♩} = 132$

35



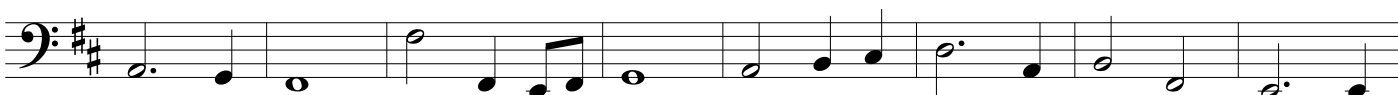
42



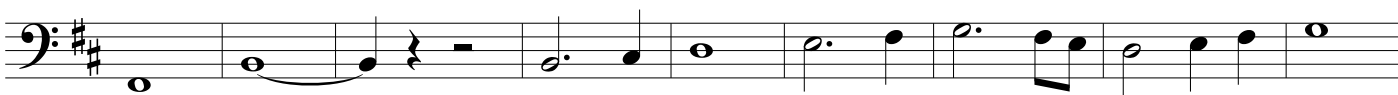
50



58



66



75



83



92



100



108



116



2
124

rit.

A single musical staff in bass clef with a key signature of two sharps (F# and C#). It contains measures 124 through 131. The notes are: 124: G2, A2, B2, C3; 125: D3, E3, F3, G3; 126: A3, B3, C4, D4; 127: E4, F4, G4, A4; 128: B4, C5, D5, E5; 129: F5, G5, A5, B5; 130: C6, D6, E6, F6; 131: G6, A6, B6, C7. The piece concludes with a fermata over the final note.

132

A single musical staff in bass clef with a key signature of two sharps (F# and C#). It contains measure 132, which begins with a quarter note G2 and ends with a double bar line.